



Fulbrook Lane, Sherbourne,  
Warwick, CV35 8AR, ENGLAND

Tel: 01926 624800  
Fax: 01926 624900

MICRO SYSTEM RADIO/POWER INTERFACE UNIT

# LARGE POWER FILTER (C TYPE)

REF: E007-2 01-08-97

## INSTALLATION INSTRUCTIONS

### WARNING:

Connection to voltage supplies other than 12Volts DC, or incorrect polarity connection, will damage the filter and may cause a fire.

The Large Power Filter should only be connected to a 12Volt battery and must never be connected directly to a voltage regulator.

When connecting the red input lead, a fuse must also be installed in-line (10 Amp Fuse Maximum) to protect the lead in the event of a short circuit.



Be sure to observe all standard electrical precautions during the installation of the power filter.

**CONNECT THE BLUE OUTPUT LEAD TO THE POSITIVE TERMINAL OF THE EQUIPMENT TO BE SUPPLIED AND THE BLACK LEAD TO THE NEGATIVE TERMINAL.**

### OUTPUT

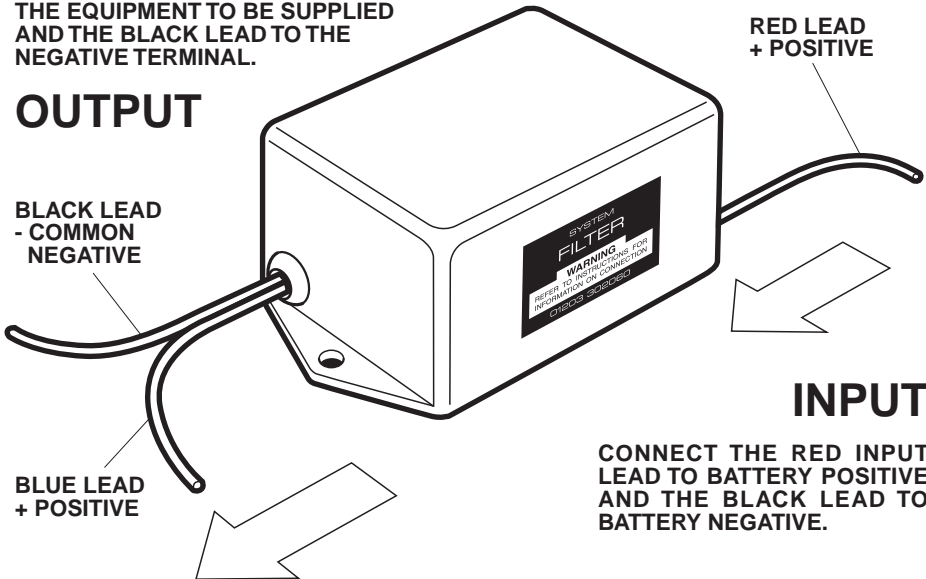
**BLACK LEAD - COMMON NEGATIVE**

**BLUE LEAD + POSITIVE**

**RED LEAD + POSITIVE**

### INPUT

**CONNECT THE RED INPUT LEAD TO BATTERY POSITIVE AND THE BLACK LEAD TO BATTERY NEGATIVE.**



**IMPORTANT**

READ THIS INFORMATION CAREFULLY BEFORE ATTEMPTING TO USE THIS ITEM OF EQUIPMENT